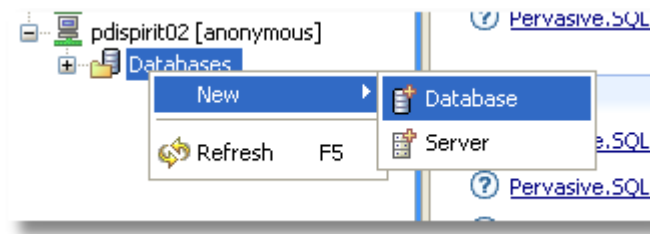
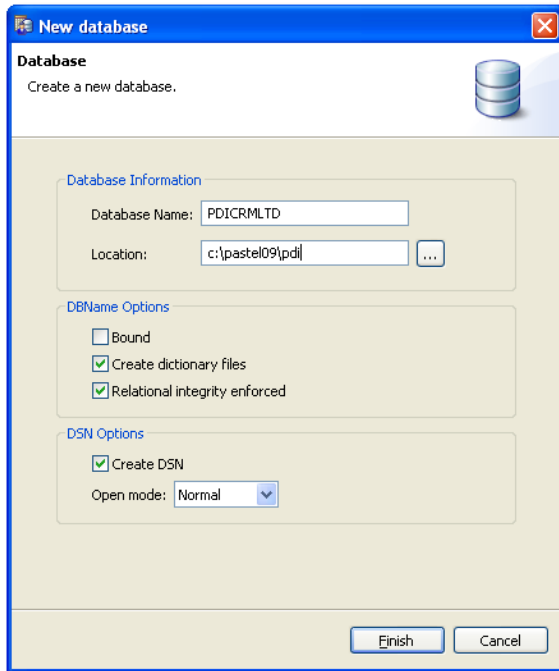


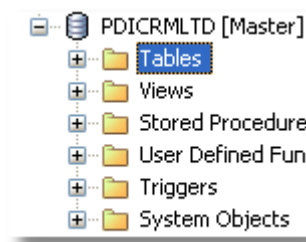
1. On the Pervasive service create a new database – pointing to the Pastel data folder that would be present, on the server



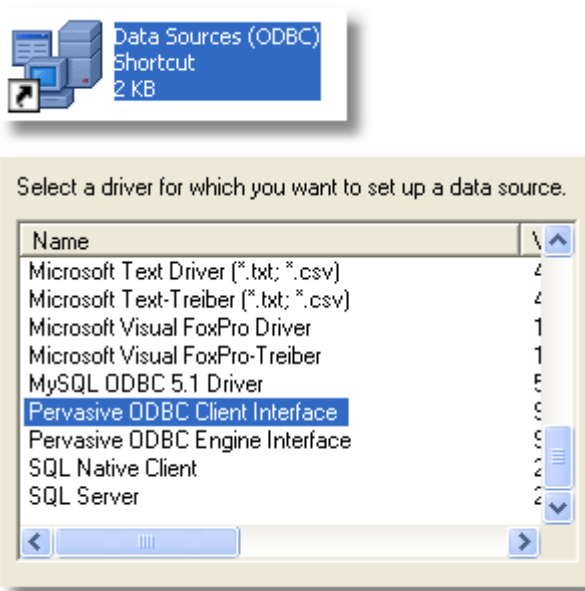
2. Create the DSN/Database name with something different that PDI CRM expects i.e **PDICRMLTD**



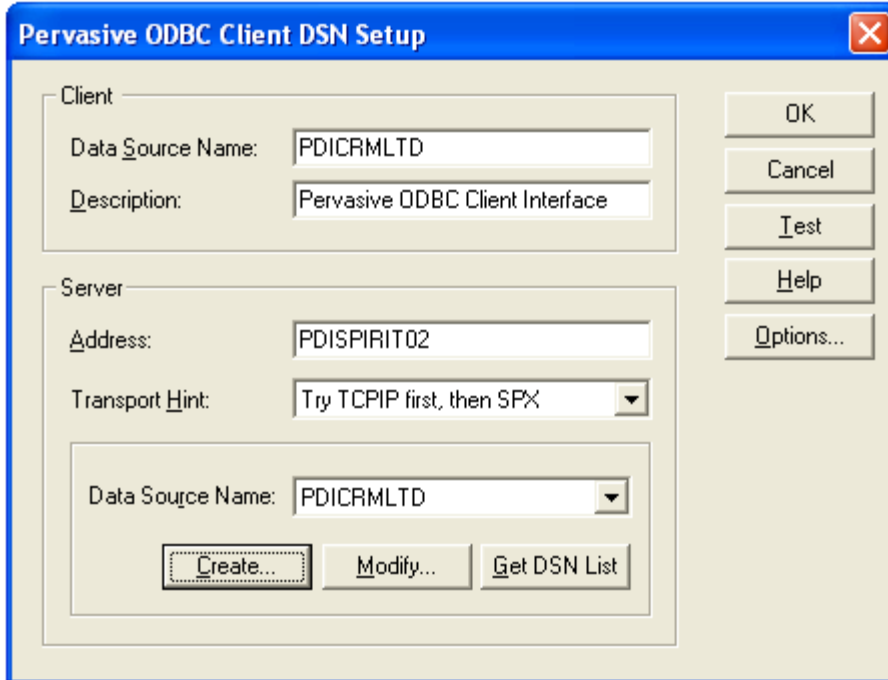
3. So we now have a DSN on the service named **PDICRMLTD**



- Now on the Client machine we create an ODBC entry that links to the **PDICRMLTD** DSN on the service



So we create a ODBC Client DSN with the Server Address set to the Pervasive Server and then press the **Get DSN List** to retrieve the DSN's that are on the server and choose the **PDICRMLTD** we created above. Press [Test] and [Ok] if all is OK



5. Now with the CRM System Setup we select the **PDICRMLTD** from the available ODBC DSN's and because it is not default DSN that PDI CRM Lite expects it will not try and change the DSN settings

The screenshot shows a Windows dialog box titled "System Parameters". It contains the following fields and controls:

- Link to Pastel company:** A text box containing "c:\pastel09\pdi\" with a browse button (folder icon).
- Shared Report path:** An empty text box with a browse button (document icon).
- ODBC Report DSN (if default PDICRMPASTEL is used it will be updated with pastel company):** A dropdown menu currently showing "PDICRMLTD".
- Instructions:** "If you are using the default ODBC (PDICRMPASTEL) please supply the pervasive server, username and password used to connect. The pervasive entry will be updated with these details."
- Pervasive Server name:** A text box containing "PDISPIRIT02" with a browse button.
- User name:** An empty text box.
- Password:** An empty text box.
- Show characters:** An unchecked checkbox.
- Data location relative to Pervasive server:** A text box containing "c:\pastel09\pdi\".
- Buttons:** "Save", "Cancel", and "Close" buttons at the bottom.

And that should be that... whether you set up a User DSN or System DSN is really up to you and whether a number of users could possibly log-in to the same machine